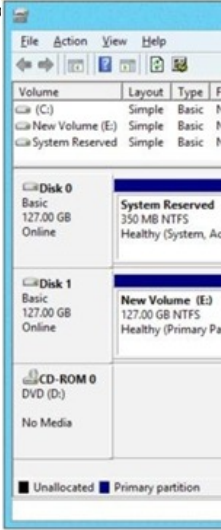
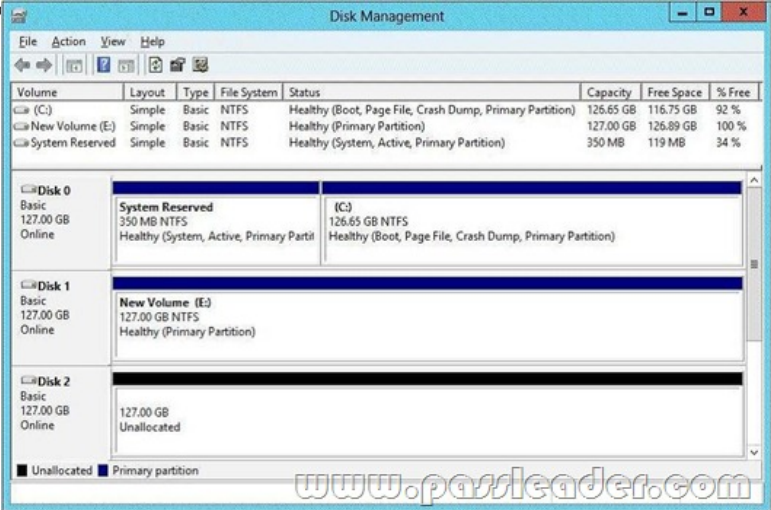


[2016-NEW! Exam 70-410 485q VCE and PDF Dumps Updated By PassLeader For Free (Question 91 – Question 120)

New 70-410 Exam Questions Updated Today! PassLeader just released the latest Microsoft 70-410 pdf and vce exam dumps(Now Total 485q) with all new exam questions, which will help you 100% passing the newest 70-410 exam. This new questions are exactly the same as real test's. Now visit [passleader.com](#) to get the newest 485q 70-410 pdf or vce exam dumps with 10% discount and FREE VCE TEST SOFTWARE! keywords: 70-410 exam,485q 70-410 exam dumps,485q 70-410 exam questions,70-410 pdf dumps,70-410 practice test,70-410 vce dumps,70-410 study guide,70-410 braindumps,Installing and Configuring Windows Server 2012 R2 Exam P.S. Download Free 70-410 PDF Dumps and Preview PassLeader 70-410 VCE Dumps At The End Of This Post!!! (Ctrl+End) QUESTION 91You have a server named Server1 that runs Windows Server 2012 R2. Server1 has the Hyper-V server role installed. The disks on Server1 are configured as shown in the exhibit. (Click the Exhibit button.) You create a virtual machine on Server1. You need to ensure that you can configure a pass-through disk for the virtual machine. What should you do?

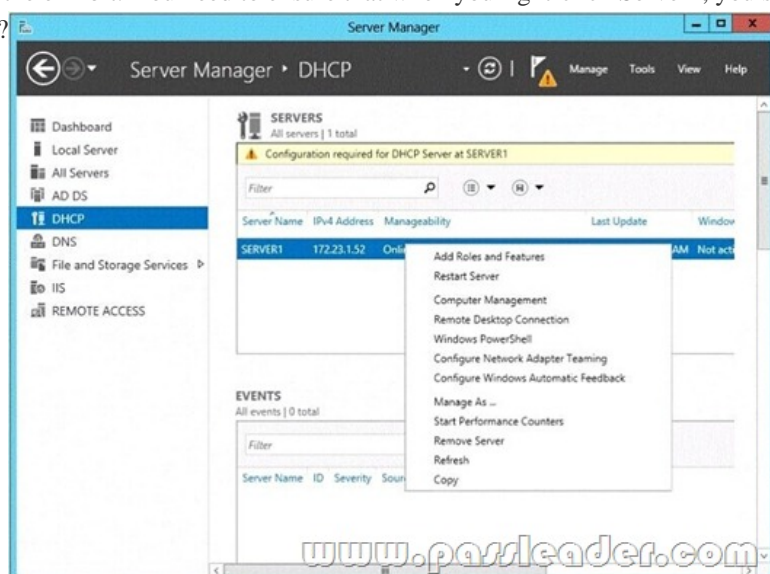


A. Delete partition E.B. Convert Disk 1 to a GPT diskC. Convert Disk 1 to a dynamic disk.D. Take Disk 1 offline. Answer: D QUESTION 92Your network contains an Active Directory domain named contoso.com. The domain contains two servers named Server2 runs Windows Server 2012 R2. You create a security template named Template 1 by using the Security Templates snap-in. You need to apply template 1 to Server 2. Which tool should you use? A. Security Templates.B. Computer Management.C. Security Configuration and Analysis.D. System Configuration. Answer: C QUESTION 93Your network contains an Active Directory domain named contoso.com. The domain contains a domain controller named DCS. DC5 has a Server Core Installation of Windows Server 2012 R2. You need to uninstall Active Directory from DC5 manually. Which tool should you use? A. The ntdsutil.exe commandB. The dcpromo.exe commandC. The Remove-WindowsFeaturecmdletD. The Remove-ADComputercmdlet Answer: A QUESTION 94You have a server named Server 2 that runs Windows Server 2012 R2. Server 2 has the Hyper-V server role installed. The disks on Server2 are configured as shown in the exhibit. (Click the Exhibit button). You create a virtual machine on Server2 named VM1. You need to ensure that you can configure a pass-through disk for VM1. What should you do?



A. Convert Disk 1 to a MBR disk.B. Convert Disk 1 to a basic disk.C. Take Disk 1 offline.D. Create a partition on Disk 1.

Answer: C QUESTION 95You have a file server named Server1 that runs Windows Server 2012 R2. Server1 has following hardware configurations:- 16GB of RAM- A single quad-core CPU- Three network teams that have two network adapters each You add additional CPUs and RAM to Server 1. You repurpose Server1 as a virtualization host. You install the Hyper-V server role on Server1. You need to create four external virtual switches in Hyper-V. Which cmdlet should you run first? A. Set-NetAdapter.B. Add-Net1.bfoTeamNicC. Add-VMNetworkAdapterD. Remove-NetLbfoTeam Answer: D QUESTION 96Your network contains an Active Directory domain named contoso.com. The domain contains two servers named Server1 and Server2 that run Windows Server 2012 R2. You create a security template named Template1 by using the Security Templates snap-in. You need to apply Template1 to Server2. Which tool should you use? A. Authorization ManagerB. Local Security PolicyC. Certificate Templates D. System Configuration Answer: B QUESTION 97Your network contains an Active Directory domain named adatum.com. The domain contains a member server named Server1 and a domain controller named DC2. All servers run Windows Server 2012 R2. On DC2, you open Server Manager and you add Server1 as another server to manage. From Server Manager on DC2, you right-click Server1 as shown in the exhibit. You need to ensure that when you right-click Server1, you see the option to run the DHCP console. What should you do?



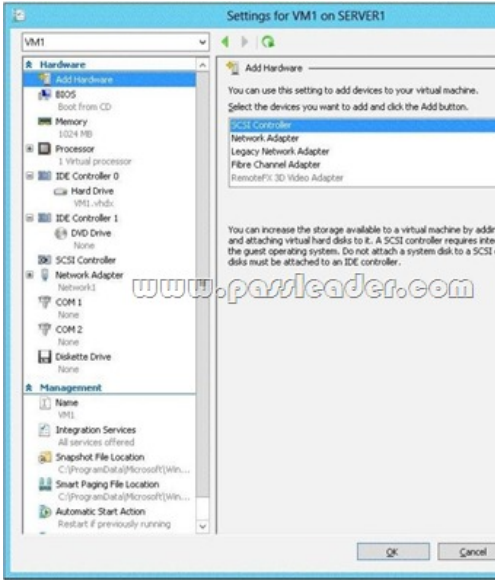
A. On Server1, install the Feature Administration Tools.B. In the domain, add DC1 to the DHCP Administrators group.C. On DC2 and Server1, run winrm quickconfig.D. On DC2, install the Role Administration Tools. Answer: D QUESTION 98Your

network contains an Active Directory domain named contoso.com. The domain contains a server named Server 2012. You create a group Manged Service Account named gservice1. You need to configure a service named Service1 to run as the gservice1 account. How should you configure Service1? A. From a command prompt, run sc.exe and specify the config parameterB. From Windows PowerShell,run Set-Service and specify the -PassThrough parameterC. From Windows PowerShell,run Set-Service and specify the -StartupType parameterD. From Services Console configure the General settings Answer: A QUESTION 99Your

network contains an Active Directory domain named contoso.com. An organizational unit (OU) named OU1 contains user accounts and computer accounts. A Group Policy object (GPO) named GP1 is linked to the domain. GP1 contains Computer Configuration settings and User Configuration settings. You need to prevent the User Configuration settings in GP1 from being applied to users. The solution must ensure that the Computer Configuration settings in GP1 are applied to all client computers. What should you configure? A. the Group Policy loopback processing modeB. the Block Inheritance featureC. the Enforced settingD. the GPO Status Answer: A QUESTION 100Your network contains two Hyper-V hosts named Host1 and Host2. Host1 contains a virtual machine named VM1. Host2 contains a virtual machine named VM2. VM1 and VM2 run Windows Server 2012 R2. You install the Network Load Balancing feature on VM1 and VM2. You need to ensure that the virtual machines are configured to support Network Load Balancing (NLB). Which virtual machine settings should you configure on VM1 and VM2? A. Router guardB. DHCP guardC. Port mirroringD. MAC address Answer: D QUESTION 101Your network contains a Windows Server 2012 R2 image named Server12.wim. Server12.wim contains the images shown in the following table.

Index number	Image name
1	Windows Server 2012 Server Standar
2	Windows Server 2012 Server Standar
3	Windows Server 2012 Server Dater
4	Windows Server 2012 Server Dater

Server12.wim is located in C:. You need to enable the Windows Server Migration Tools feature in the Windows Server 2012 R2 Server Datacenter image. You want to achieve this goal by using the minimum amount of Administrative effort. Which command should you run first? A. `dism.exe /mount-wim /wimfile:c:Server12.wim /index:4 /mountdir:c:mountB. imagex.exe /capture c:c:Server12.wim "windows server 2012server datacenter"C. dism.exe /image: c:Server12.wim /enable-feature /featurename: servermigrationD. imagex.exe /apply c:Server12.wim 4 c: Answer: A QUESTION 102Your network contains an Active Directory domain named contoso.com. The domain contains a server named Server1. Server1 runs Windows Server 2012 R2 and has the Hyper-V server role installed. On Server1, you create a virtual machine named VM1. When you try to add a RemoteFX 3D Video Adapter to VM1, you discover that the option is unavailable as shown in the following exhibit.`



You need to add the RemoteFX 3D Video Adapter to VM1. What should you do first? A. On Server1, run the `Enable-VMRemoteFxPhysicalVideoAdapter` cmdlet.B. On Server1, install the Media Foundation feature.C. On Server1, run the `Add-VMRemoteFx3dVideoAdapter` cmdlet.D. On Server1, install the Remote Desktop Virtualization Host (RD Virtualization Host) role service. Answer: D QUESTION 103Your network contains an Active Directory domain named contoso.com. The network contains a domain controller named DC1 that has the DNS Server server role installed. DC1 has a standard primary DNS zone for contoso.com. You need to ensure that only client computers in the contoso.com domain will be able to add their records to the contoso.com zone. What should you do first? A. Modify the Security settings of Dc1B. Modify the Security settings of the contoso.com zone.C. Store the contoso.com zone in Active DirectoryD. Sign the contoso.com zone. Answer: C QUESTION 104 Your network contains a server named Server1 that runs Windows Server 2012 R2. Server1 has the Hyper-V server role installed. Server1 hosts four virtual machines named VM1, VM2, VM3, and VM4. Server1 is configured as shown in the following table.

Hardware component
Processor
Memory
Disk
Network

You install a network monitoring application on VM2. You need to ensure that all of the traffic sent to VM3 can be captured on VM2. What should you configure? A. NUMA topologyB. Resource controlC. resource meteringD. virtual Machine Chimney E. the VLAN IDF. Processor CompatibilityG. the startup orderH. Automatic Start ActionI. Integration ServicesJ. Port mirroringK. Single-root I/O virtualization Answer: J QUESTION 105Your network contains a server named Server1 that runs Windows Server 2012 R2. Server1 has the Hyper-V server role installed. Server1 hosts four virtual machines named VM1, VM2, VM3, and VM4. Server1 is configured as shown in the following table.

Hardware component	Configuration
Processor	Eight quad-core CPUs that have non-uniform memory access (NUMA)
Memory	32 GB of RAM
Disk	Two local 4-TB disks
Network	Eight network adapters VMQ-supported PCI-SIG-supported

You plan to schedule a complete backup of Server1 by using Windows Server Backup. You need to ensure that the state of VM1 is saved before the backup starts. What should you configure? A. NUMA topologyB. Resource controlC. resource meteringD. virtual Machine ChimneyE. the VLAN IDF. Processor CompatibilityG. the startup orderH. Automatic Start ActionI. Integration ServicesJ. Port mirroringK. Single-root I/O virtualization Answer: I QUESTION 106Your network contains a server named Server1 that runs Windows Server 2012 R2. Server1 has the Hyper-V server role installed. Server1 hosts four virtual machines named VM1, VM2, VM3, and VM4. Server1 is configured as shown in the following table.

Hardware component	Configuration
Processor	Eight quad-core CPUs that have non-uniform memory access (NUMA)
Memory	32 GB of RAM
Disk	Two local 4-TB disks
Network	Eight network adapters VMQ-supported PCI-SIG-supported

VM3 is used to test applications. You need to prevent VM3 from synchronizing its clock to Server1. What should you configure? A. NUMA topologyB. Resource controlC. resource meteringD. virtual Machine ChimneyE. the VLAN IDF. Processor CompatibilityG. the startup orderH. Automatic Start ActionI. Integration ServicesJ. Port mirroringK. Single-root I/O virtualization Answer: I QUESTION 107Your network contains a server named Server1 that runs Windows Server 2012 R2. Server1 has the Hyper-V server role installed. Server1 hosts four virtual machines named VM1, VM2, VM3, and VM4. Server1 is configured as shown in the following table.

Hardware component	Configuration
Processor	Eight quad-core CPUs that have non-uniform memory access (NUMA)
Memory	32 GB of RAM
Disk	Two local 4-TB disks
Network	Eight network adapters VMQ-supported PCI-SIG-supported

You need to configure VM4 to track the CPU, memory, and network usage. What should you configure? A. NUMA topologyB. Resource controlC. resource meteringD. Virtual Machine ChimneyE. the VLAN IDF. Processor CompatibilityG. the startup orderH. Automatic Start ActionI. Integration ServicesJ. Port mirroringK. Single-root I/O virtualization Answer: C QUESTION 108Your network contains a server named Server1 that runs Windows Server 2012 R2. Server1 has the Hyper-V server role installed. Server1 hosts four virtual machines named VM1, VM2, VM3, and VM4. Server1 is configured as shown in the following table.

Hardware component	Configuration
Processor	Eight quad-core CPUs that have non-uniform memory access (NUMA)
Memory	32 GB of RAM
Disk	Two local 4-TB disks
Network	Eight network adapters VMQ-supported PCI-SIG-supported

You need to ensure that VM1 can use more CPU time than the other virtual machines when the CPUs on Server1 are under a heavy load. What should you configure? A. NUMA topologyB. Resource controlC. resource meteringD. Virtual Machine ChimneyE. The VLAN IDF. Processor CompatibilityG. The startup orderH. Automatic Start ActionI. Integration ServicesJ. Port mirroringK. Single-root I/O virtualization Answer: B QUESTION 109Your network contains a server named Server1 that runs Windows Server 2012 R2. Server1 has the Hyper-V server role installed. Server1 hosts four virtual machines named VM1, VM2, VM3, and VM4. Server1 is configured as shown in the following table.

Hardware component	Configuration
Processor	Eight quad-core CPUs that have non-uniform memory access (NUMA)
Memory	32 GB of RAM
Disk	Two local 4-TB disks
Network	Eight network adapters VMQ-supported PCI-SIG-supported

VM2 sends and receives large amounts of data over the network. You need to ensure that the network traffic of VM2 bypasses the virtual switches of the parent partition. What should you configure? A. NUMA topologyB. Resource controlC. Resource meteringD. Virtual Machine ChimneyE. The VLAN IDF. Processor CompatibilityG. The startup orderH. Automatic Start ActionI. Integration ServicesJ. Port mirroringK. Single-root I/O virtualization Answer: K QUESTION 110Your network contains an Active Directory domain named contoso.com. The network contains a member server named Server1 that runs Windows Server 2012 R2. Server1 has the DNS Server server role installed and has a primary zone for contoso.com. The Active Directory domain contains 500 client computers. There are an additional 20 computers in a workgroup. You discover that every client computer on the network can add its record to the contoso.com zone. You need to ensure that only the client computers in the Active Directory domain can register records in the contoso.com zone. What should you do first? A. Move the contoso.com zone to a domain controller that is configured as a DNS serverB. Configure the Dynamic updates settings of the contoso.com zoneC. Sign the contoso.com zone by using DNSSECD. Configure the Security settings of the contoso.com zone Answer: A QUESTION 111Your company has a remote office that contains 1,600 client computers on a single subnet. You need to select a subnet mask for the network that will support all of the client computers. The solution must minimize the number of unused addresses. Which subnet mask should you select? A. 255.255.248.0B. 255.255.252.0C. 255.255.254.0D. 255.255.240.0 Answer: A QUESTION 112You plan to deploy a DHCP server that will support four subnets. The subnets will be configured as shown in the following table.

Subnet
Subnet1
Subnet2
Subnet3
Subnet4

You need to identify which network ID you should use for each subnet. What should you identify? To answer, drag the appropriate network ID to the each subnet in the answer area.

Network IDs

10.10.1.0/26

10.10.8.0/22

10.10.16.0/25

10.10.128.0/23

Answer Area

Subnet1

Subnet2

Subnet3

Subnet4

Network ID

Network ID

Network ID

Network ID

Answer:

Network IDs

Subnet1

Subnet2

Subnet3

Subnet4

10.10.1.0/26

10.10.16.0/25

10.10.128.0/23

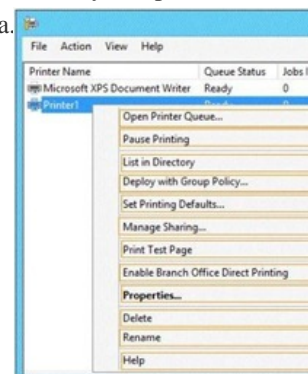
10.10.8.0/22

QUESTION 113 You work as a senior administrator at contoso.com. The contoso.com network consists of a single domain named contoso.com. All servers on the contoso.com network have Windows Server 2012 R2 installed, and all workstations have Windows 8 installed. You are running a training exercise for junior administrators. You are currently discussing a Windows PowerShell cmdlet that activates previously de-activated firewall rules. Which of the following is the cmdlet being discussed? A.

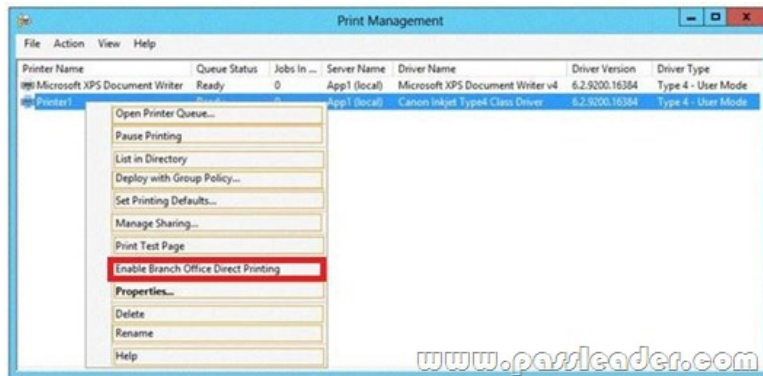
Set-NetFirewallRuleB. Enable-NetFirewallRuleC. Set-NetIPsecRuleD. Enable-NetIPsecRule Answer: B **QUESTION 114** Your network contains a server named Server1 that runs Windows Server 2012 R2. Server1 is located on the same subnet as all of the client computers. A network technician reports that he receives a "Request timed out" error message when he attempts to use the ping utility to connect to Server1 from his client computer. The network technician confirms that he can access resources on Server1 from his client computer. You need to configure Windows Firewall with Advanced Security on Server1 to allow the ping utility to connect. Which rule should you enable? A. File and Printer Sharing (Echo Request - ICMPv4-In)B. Network Discovery (WSD-In)C. File and Printer Sharing (NB-Session-In)D. Network Discovery (SSDP-In) Answer: A **QUESTION 115** You have a file server named Server1 that runs Windows Server 2012 R2. You need to ensure that a user named User1 can use Windows Server Backup to create a complete backup of Server1. What should you configure? A. The local groups by using Computer Management B. A task by using Authorization ManagerC. The User Rights Assignment by using the Local Group Policy EditorD. The Role Assignment by using Authorization Manager Answer: A **QUESTION 116** Your network contains a production Active Directory forest named contoso.com and a test Active Directory forest named contoso.test. A trust relationship does not exist between the forests. In the contoso.test domain, you create a backup of a Group Policy object (GPO) named GPO1. You transfer the backup of GPO1 to a domain controller in the contoso.com domain. You need to create a GPO in contoso.com based on the settings of GPO1. You must achieve this goal by using the minimum amount of Administrative effort. What should you do? A. From Windows PowerShell, run the Get-GPO cmdlet and the Copy- GPO cmdlet.B. From Windows PowerShell, run the New-GPO cmdlet and the Import- GPO cmdlet.C. From Group Policy Management, create a new starter GPO. Right-click the new starter GPO, and then click Restore from Backup.D. From Group Policy Management, right-click the Group Policy Objects container, and then click Manage Backups. Answer: B **QUESTION 117** Your network contains an active directory forest. The forest functional level is Windows server 2012. The forest contains a single domain. The domain contains a member server named Server1 that run windows server 2012. You purchase a network scanner named Scanner1 that supports Web Services on Devices (WDS). You need to share the network scanner on Server1 Which server role should you install on Server1? A. Web Server (IIS)B. Fax ServerC. File and Storage ServicesD. Print and Document Services Answer: D **QUESTION 118** Your network contains an Active Directory forest named adatum.com. The forest contains a child domain named asia.adatum.com. The asia.adatum.com child domain contains a server named DHCP1 that runs Windows Server 2012 R2. You install the DHCP Server server role on DHCP1. You have access to the administrative accounts shown in the following table.

Account name	Account location	Member of
Admin1	DHCP1	DHCP1\Administrators
Admin2	Adatum.com	Adatum\Enterprise Admins
Admin3	Asia.adatum.com	Asia\Domain Admins
Admin4	Asia.adatum.com	Asia\Administrators

You need to authorize DHCP1. Which user account should you use? A. Admin1B. Admin2C. Admin3D. Admin4 Answer: B **QUESTION 119** Your network contains a server named Server1 that runs Windows Server 2012 R2. App1 has the Print and Document Services server role installed. All client computers run Windows 8. The network contains a network-attached print device named Printer1. From App1, you share Printer1. You need to ensure that users who have connected to Printer1 previously can print to Printer1 if App1 fails. What should you configure? To answer, select the appropriate option in the answer area.



Answer:



QUESTION 120 You have a server named Server1. Server1 runs Windows Server 2012 R2. Server1 has two network adapters and is located in a perimeter network. You need to install a DHCP Relay Agent on Server1. Which node should you use to add the DHCP Relay Agent? To answer, select the appropriate node in the answer area.



Answer:



Download Free 70-410 PDF Dumps From Google Drive:

https://drive.google.com/open?id=0B-ob6L_OjGLpfJzOE1fWnJOWVtaE93SnJNT3gtaTNYYNpZkw5THBSMWRKbFlfaXh1azg (Explanation For Every Question Is Available!) PassLeader 70-410 VCE Dumps Screenshots:

PassLeader Premium 70-410 VCE Dumps Preview

Question 18 of 473 (Exam A, Q2)

☐ Mark

Your network contains an Active Directory domain named adatum.com. The domain contains a member server named Host1. Host1 runs Windows Server 2012 R2 and has the Hyper-V server role installed.

Host1 hosts two virtual machines named VM5 and VM6. Both virtual machines connect to a virtual switch named Virtual1.

On VM5, you install a network monitoring application named Monitor1.

You need to capture all of the inbound and outbound traffic to VM6 by using Monitor1.

Which two commands should you run from Windows PowerShell? (Each correct answer presents part of the solution. Choose two.)

- ☐ A. Get-VM "VM5" | Set-VMNetworkAdapter-IsWeight 1
- ☐ B. Get-VM "VM5" | Set-VMNetworkAdapter-IsWeight 0
- ☐ C. Get-VM "VM5" | Set-VMNetworkAdapter-PortMirroring Source
- ☐ D. Get-VM "VM5" | Set-VMNetworkAdapter-AllowTeaming On
- ☐ E. Get-VM "VM5" | Set-VMNetworkAdapter-PortMirroring Destination
- ☐ F. Get-VM "VM5" | Set-VMNetworkAdapter-AllowTeaming On

Previous Next Review Show Answer Show List Save Session End Exam

PassLeader Premium 70-410 VCE Dumps Preview

Question 27 of 473 (Exam A, Q7)

☐ Mark Instructions

HOTSPOT

You have a Hyper-V host named Hyperv1 that runs Windows Server 2012 R2. Hyperv1 hosts a virtual machine named Server1. Server1 uses a disk named Server1.vhdx that is stored locally on Hyperv1.

You stop Server1, and then you move Server1.vhdx to an iSCSI target that is located on another server.

You need to configure Server1 to meet the following requirements:

- Ensure that Server1 can start by using Server1.vhdx.
- Prevent Server1.vhdx from consuming more than 500 IOPS on the iSCSI target.

Settings for SERVER1 on SERVER1

SERVER1

- Hardware
 - Add Hardware
 - Firmware
 - Boot from File
 - Memory
 - 3224 MB
 - Processor
 - 1 virtual processor
 - Compatibility
 - NUMA
 - SCSI Controller
 - Hard Drive
 - Server1.vhdx

Previous Next Review Show Answer Show List Save Session End Exam

Download New 70-410 VCE Dumps From PassLeader: <http://www.passleader.com/70-410.html> (New Questions Are 100% Available and Wrong Answers Have Been Corrected!!!)